

HARVEY

by Mary Chase

Directed by Alan Bailey*

*Member of the Society of Stage Directors and Choreographers, Inc.

Stage Manager & Props Designer.....Troy Iverson
Set Designer Tom Berger
Costume Designer Angela Finnes
Lighting Designer Jason Underferth
Sound Designer.....Andy Waltzer
Assistant Stage Manager & Props Designer..... Jenna Bolland
ASL Interpreter (June 29 performance) Gail Devereaux

CAST

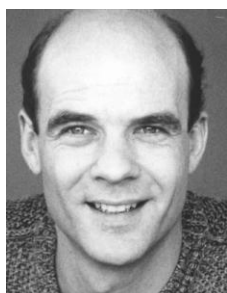
Myrtle Mae Simmons Adrienne Sweeney
Veta Louise Simmons Stela Burdt
Elwood P. Dowd Eric Bunge
Mrs. Ethel Chauvenet Nancy Carruthers Huisenga
Ruth Kelly, R.N.Jill Underwood
Duane WilsonMike Davidovich
Lyman Sanderson, M.D. Scott Dixon
William R. Chumley, M.D. Hal Cropp
Betty Chumley Barbara Benson Keith
Judge Omar Gaffney..... David Hennessey
E.J. LofgrenTroy Iverson

SETTING

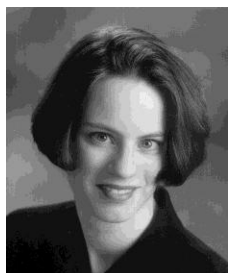
1946. The library of the old Dowd family mansion and the reception room of Chumley's Rest.

This play will be performed with one intermission.

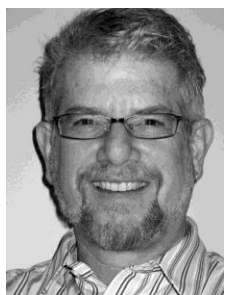
BIOS



Eric Bunge is pleased to serve the Commonweal as its Managing Director. Eric has a long history with the area and the company. He grew up on a hobby farm on the outskirts of nearby Preston. After receiving a B.A. from Luther College (Decorah, IA) and studying at the University of Oslo (Norway) he attended the National Theatre Conservatory in Denver, Colorado. He received his M.F.A. in 1990. In 1989 he - together with NTC classmates, Scott Putman and Scott Olson - founded the Commonweal Theatre Company, and has directed and acted in nearly 20 productions since.



Stela Burdt is thrilled to be celebrating her ninth season with The Commonweal. Some of her favorite shows in Lanesboro include: Crimes of the Heart, Bus Stop, How I Learned to Drive, Zombies from the Beyond, Sanders Family Christmas and The Nutcracker & The Mouse King. When not on stage she proudly serves as Box Office Manager and is the Artistic Director of "Over the Back Fence", Commonweal's summer radio show. Stela is also a freelance vocalist, pianist, and music director and with her husband, Scott Dixon, makes her home in Lanesboro.



Harold N. Cropp is now in his 17th season with the Commonweal, where favorite roles include Groucho, Uncle Vanya, Scrooge, Shylock, Matt Friedman in Talley's Folly, and Botvinnik in A Walk in the Woods. Directing credits include Bullshot Crummond, The Cmplt Wks of Wm Shakespeare (abridged), Emperor of the Moon, Heartland Portrait, The Wild Duck, Measure for Measure, and Ghosts. He holds a B.A. in Theatre from Brown, an M.B.A. from Santa Clara University, and an M.F.A. in acting from the National Theatre Conservatory in Denver. Hal currently serves as Artistic Director of the Commonweal.



Mike Davidovich is thrilled to join the Commonweal as an Apprentice. Most recently Mike has worked with CLIMB Theatre, focusing on character building educational theatre for K-12th graders. He has also appeared at the Forestburgh Playhouse and the Seacoast Repertory Theatre. Mike has also worked as director, musical director, and lighting designer for various productions on the east coast. Mike holds a B.A. from the University of New Hampshire, and has trained

at The Boston Conservatory.



Scott Dixon is now in his eighth season at Commonweal, where some of his favorite onstage work has been in *An Enemy of the People*, *The Wild Duck*, *Twelfth Night*, *Measure for Measure*, *A Streetcar Named Desire*, *The Mystery of Irma Vep*, *Wait Until Dark* and *How I Learned to Drive*. Outside of Lanesboro, his acting credits include Kentucky Repertory Theatre, St Croix Festival Theatre and Hilberry Repertory Theatre. Scott earned his M.F.A. in

Acting from Wayne State University in Detroit and now makes his home in Lanesboro with his wife, Stela Burdt.



David Hennessey works with the Commonweal's development team and has performed in more than 20 shows spanning 11 seasons including *Inspecting Carol* (Sydney), *Wait Until Dark* (Carlino), *Ghosts* (Engstrand), *Measure for Measure* and *Bus Stop* (Virgil). He also designed costumes for *A Streetcar Named Desire*, and worked with students at Luther College in *Peer Gynt*. Other credits include *Park Square* and *Jungle Theatres* in the Twin Cities and *American*

Players Theatre in Wisconsin. He lives in Preston with Linda, his favorite scene partner for 35 years.



Nancy Carruthers Huisenga majored in theatre at the University of Minnesota, and performed with several companies including Theatre in the Round. Her credits include *Hamlet*, *Carnival!*, *Blithe Spirit*, *'Tis Pity She's a Whore*, *Peer Gynt*, *Roshomon*, *Philadelphia Here I Come*, *Rosencrantz and Guildenstern are Dead*, and the PBS film *Trail of Tears*. Locally, she performed in Chatfield's production of *Once Upon a Mattress*, the Old Barn Theatre's production of

Sound of Music and Lanesboro Community Theatre's world premiere of *Five Flowers*. With the Commonweal she performed in *Rosmersholm*, *Steel Magnolias* and *Scapin*.



Troy Iverson is a May 2007 graduate from Viterbo University in La Crosse, Wisc. with a B.F.A. in theatre. While he is an actor at heart, Troy has spent much time refining his skills as a carpenter, stage manager, and prop designer. He was as a scenic carpenter for the Texas Shakespeare Festival last summer. A former Semester-in-Residence student at the Commonweal, Troy appeared in *Scapin* and *The Nutcracker & the Mouse King*. He most recently stepped into the

role of Policeman in Wait Until Dark.



Barbara Benson Keith is a recent arrival to the Lanesboro area, happy to be making her Commonweal debut. She was last seen in Park Rapids as Doris in *Same Time, Next Year*, and in the Twin Cities in *All My Sons* and *Jack and Rochelle*. Other favorite roles include Bella (*Angel Street*), Sister Robert Anne (*Nunsense*), Little Red Riding Hood (*Into the Woods*), Queen Gertrude (*Hamlet*), and Irene (*Crazy for You*). Barbara also works as a stained glass mosaic artist.



Adrienne Sweeney is honored to be in her 8th season with the Commonweal. Originally from Philadelphia she received her M.F.A. in Acting from the University of Arizona. Before Lanesboro became home, she worked in the Twin Cities at The History Theatre and Park Square Theatre, among others. Favorite roles at the Commonweal include Susy in *Wait Until Dark*, The Duchess in *To Fool The Eye*, and I'll Bit in *How I Learned to Drive*.



Jill Underwood moved to Lanesboro from New York City eight years ago to join the resident company. At the Commonweal, Jill has appeared in *Uncle Vanya*, *Marguerite Bonet*, *Steel Magnolias*, *A Streetcar Named Desire*, *A Doll's House*, *Medea*, and *Quilters*. Other credits include two seasons of national tours with the California Theatre Center, and six summers of repertory theatre in Sunnyvale, CA. Since receiving her B.A. in Theater from Occidental College in Los Angeles, Jill has trained at the Royal National Theatre in London and the Actors Center in NYC.